



ACCESSORIES FOR PROFILES



NEUHOFFER

WE. KNOW. WOW!



Profile accessories

Profiles must be attached to the wall. To make this easy and invisible, we have developed different fastening systems. As a clip, as a rail, with lips to seal the expansion joint, without sealing lips, for indirect, atmospheric LED lighting or cable management and many other options. We also have accessories to ensure the perfect mitre cut.



Guide to symbols

To make it easier for you to navigate through the catalogue, we have marked all products with coloured dots. These dots provide you with information on the availability and delivery time of the items in question.

We are pleased to make it easier for you to find the right item – another important step towards providing perfect service.

Green dot >>>> quickly available:

Stock items - exact details of the items in stock (decors), as well as delivery quantities and delivery times you will receive from our sales staff at the sales department.

Blue dot >>>> order-related quickly:

Articles whose BOM components are all in stock and “only” have to be assembled into a finished product get a blue dot.

Yellow dot >>>> order-related:

Articles with this marking are FN standard items, which are made to order and are bound to a defined minimum quantity and delivery times. Raw materials still have to be purchased.

Red dot: >>>> on request:

These are special items that can be manufactured on request. Raw materials, production times still have to be requested.



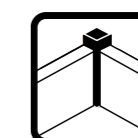
Clipholder CH23



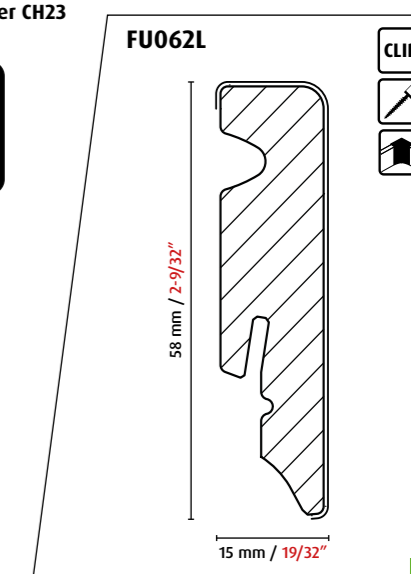
nailofix CH28



Plastic corners



Corner sticks



Example

FN Clipholder CH23

For an optimal grip.

The Clipholder CH23 is the perfect solution when you need a practical, innovative profile attachment. The special skirting clip can be screwed on, glued to the wall with standard PUR adhesives, or tacked in place with a nail gun. Then all you need to do is click the profile in place. You can remove it easily again, if needed. The unique locking technology also prevents the profile from being lifted off.

The system is ideal for crooked walls and enables a perfect fit on irregular masonry.

Product advantages:

- Unique locking technology prevents profile from lifting.
- Snap-in skirting board clip for the quick, clean and invisible installation of profiles.
- Repeated assembly and disassembly possible.
- The height of the clip can be adjusted during installation.
- Optimum hold thanks to the corrugation on the clip.
- Perfect adjustment for profile widths <math>< 18\text{mm}</math> / $$11/16''$ due to breakable flap.$
- Works on irregular masonry.
- Hole height marking on packaging.
- Patented (AT 507336, US 8171698 B2).



Product advantages:

- Plug-in system



Product advantages:

- Locking

Product advantages:

- Clip



- Package of 30 units incl. screws and dowel



- Package of 100 units

Installation:



Accessories drill template



**NEW
PRODUCT**

FN Clipholder CH25

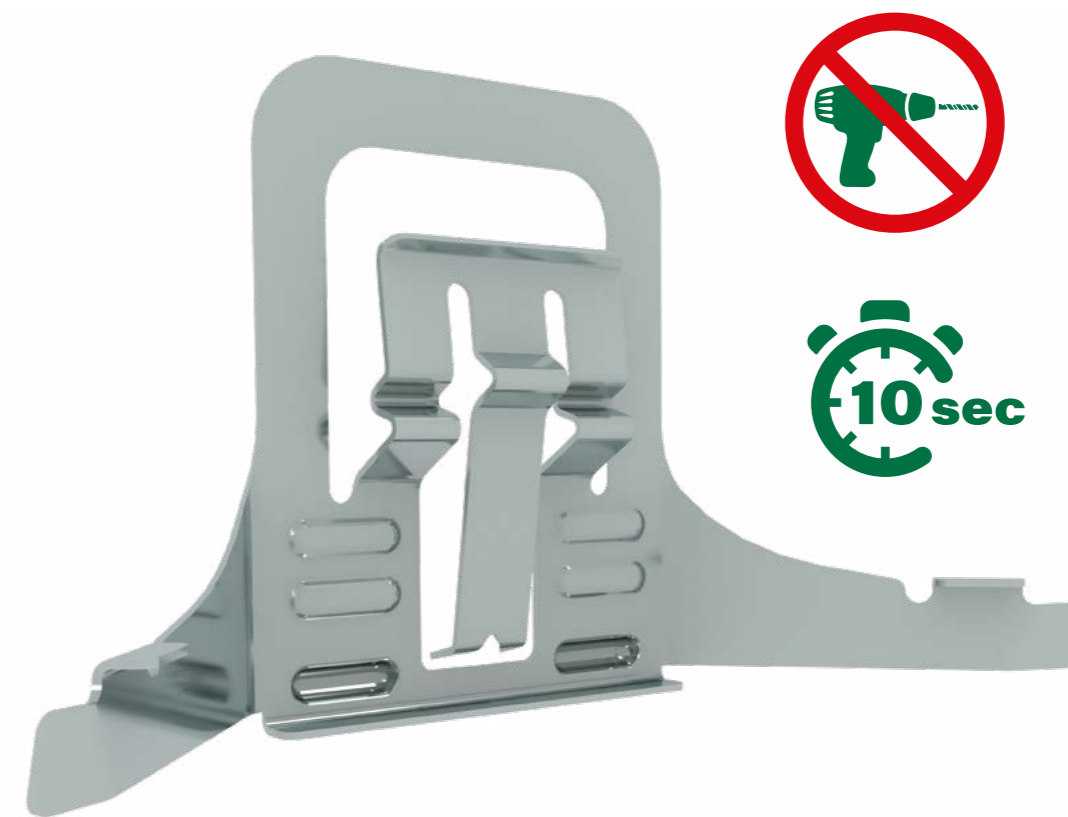
No drilling necessary.

Speed is an essential factor in many areas. Especially when installing skirting boards. Being able to do it all without using any tools or causing a mess – now that is every installer's dream.

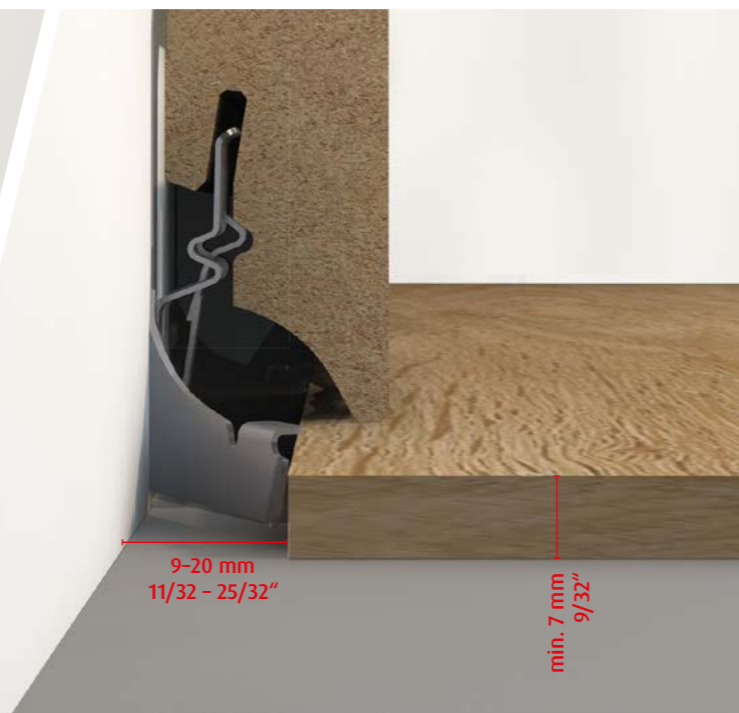
This metal clip, made from spring steel, is clamped into position in the expansion joint between the floor and the wall using our patented system. Then you simply put on the clip and you're done. You can also use the clip on all existing profiles with the tried-and-tested profile groove for the CH23 clip.

Product advantages:

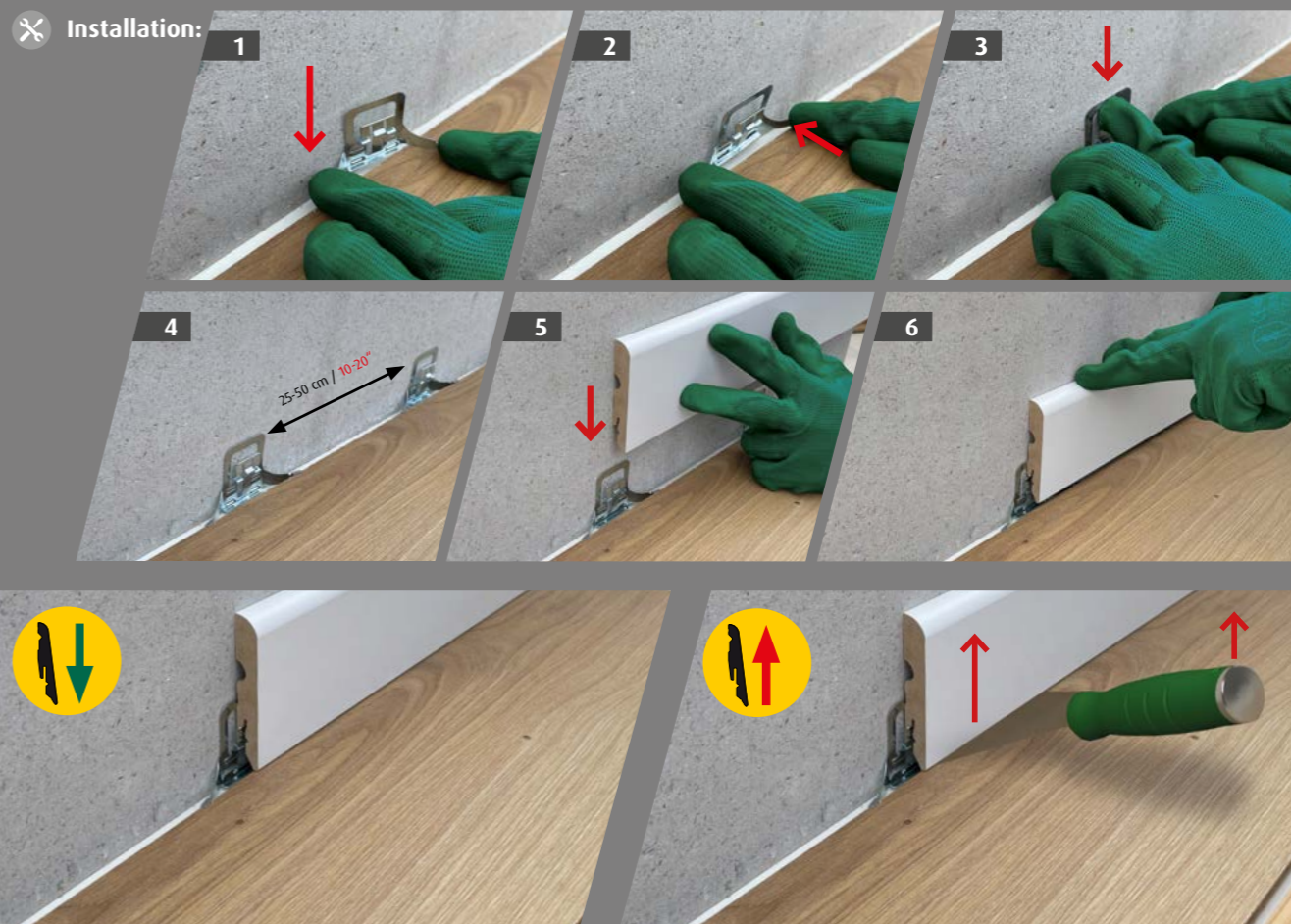
- Patented locking technology.
- For clamping in the floor expansion joint.
- No drilling, no mess during assembly.
- Snap-in skirting board clip for the quick, clean and invisible installation of profiles.
- Repeated assembly and disassembly possible.
- For profiles with a maximum height of 90 mm / 3-17/32".
- For floors of 7 mm / 9/32" thickness and up.
- Patented (AT 524434 B1).



■ Package of 30 units



✕ Installation:





FN klik-fix 23

The right connection.

Fast, practical, safe: this is the best way to describe this innovative system. The profiles "click" into place on a continuous rail that can be screwed along the entire length of the wall, glued with commercially available PUR adhesives or stapled on with a nail gun.

The bar is clamped using elastic lips, which offer optimal tolerance compensation. In addition, the unique locking technology of the FN klik-fix 23 not only prevents the strip from being lifted off, but also enables quick and easy disassembly.

Product advantages:

- Lips on the slip-on bar enable the perfect tolerance compensation.
- No slipping of cables into the expansion joint due to the continuous fixing arm.
- Practical wall mounting of the strip on a continuous rail.
- Clean and invisible installation.
- Locking technology prevents the profile from lifting off.
- Repeated assembly and disassembly possible.
- 2.38 m / 7,8 ft. in length, packed in bundles of 10, 24 in a box.



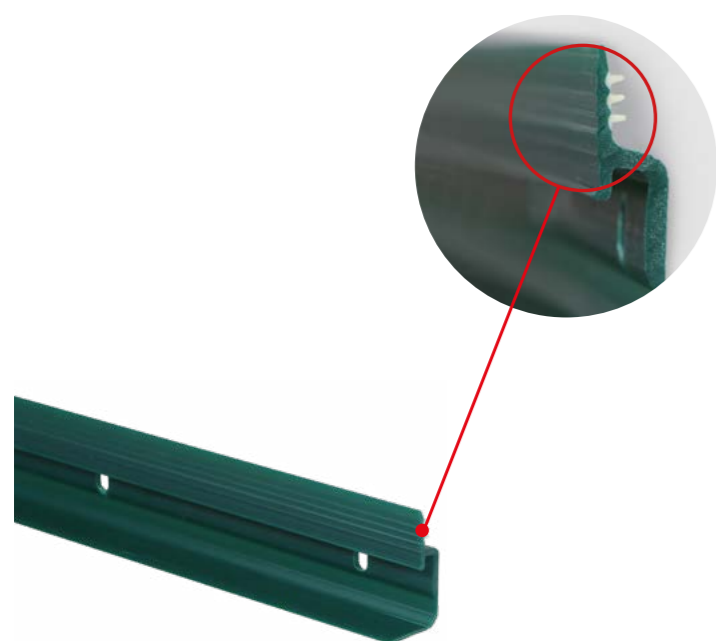
FN klik-fix 23 with sealing lip

Also for wet rooms.

Modern floors and their accessories need to be both beautiful and easy to care for. You don't want to waste time wondering whether or not you can wipe them with a damp cloth. We have the perfect solution: an attachment rail for skirting with an integrated sealing lip. This allows the attachment of any FN profile, while the sealing lip ensures that no humidity penetrates the expansion joint. This protects the lower edge of the MDF skirting.

Product advantages:

- Fastening rail with sealing lip.
- 15 mm / 19/32" width for narrow profiles.
- 20 mm / 13/16" width for wide profiles.
- The rail prevents cables routed behind the profile from slipping into the expansion joint.
- Protects the expansion joint from moisture.
- Protects the profile from moisture.



FN klik-fix 23: Rail for skirtings with L-milling 2.38 m, Packed in bundles of 10pcs, 24 bundles in a box



See installation video



FN klik-fix 23 D1: Rail with a 20 mm / 13/16" sealing lip for skirting boards with >15mm / 19/32" coverage size



FN klik-fix 23 D2: Rail with a 15 mm / 19/32" sealing lip for skirting boards with <15mm / 19/32" coverage size

WE. KNOW. WOW!

FN klik-fix 23 LED

Unique light accents for your home.

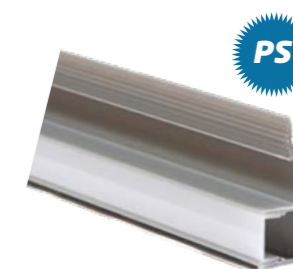
Nobody likes to stumble around in the dark at night, or wants to turn on every single light in the house just to get a cold beer from the fridge. The solution: subtle, dimmable lighting that illuminates the flooring.

A true innovation from FN: combined mounting rail and LED shaft. You can attach any Neuhofler profile up to 90 mm in height that is equipped with a clip groove. This makes the system flexible and adaptable to any room design.

The system can use any LED strips in various wattages and colours, or simply function as a shaft for cable installation. The aluminium design makes it easy for generated heat to exit the system gently.

Product advantages:

- Combination of mounting rail and LED shaft.
- Maximum flexibility - applicable for any FN profile up to 90 mm / 3-17/32" in height with CH23 clip groove.
- Various LED strips can be glued in.
- The rail can easily be mitred, a plastic corner can be used to cover the skirting
- You can also run cables or wiring in the shaft instead of LEDs.
- Excellent heat dissipation with aluminium
- LED lights highlight the grain of hardwood floors.
- Can also function as emergency lighting at night.
- The sealing lip on the cover makes the profile suitable for damp rooms.



FN klik-fix 23 LED K plastic fastening rail with semi-transparent PET cover rail, shrink-wrapped with label
Length: 2.4 m / 7.9 ft.,
packaging: 10 pcs



FN klik-fix 23 LED A aluminium fastening rail with semi-transparent PET cover rail, shrink-wrapped with label
Length: 2.4 m / 7.9 ft.,
packaging: 10 pcs

✂ Installation:



End caps for led rail
Package 2 pieces, packed with
10 pieces in the box



See installation video

WE. KNOW. WOW!



Corner Clip CH23

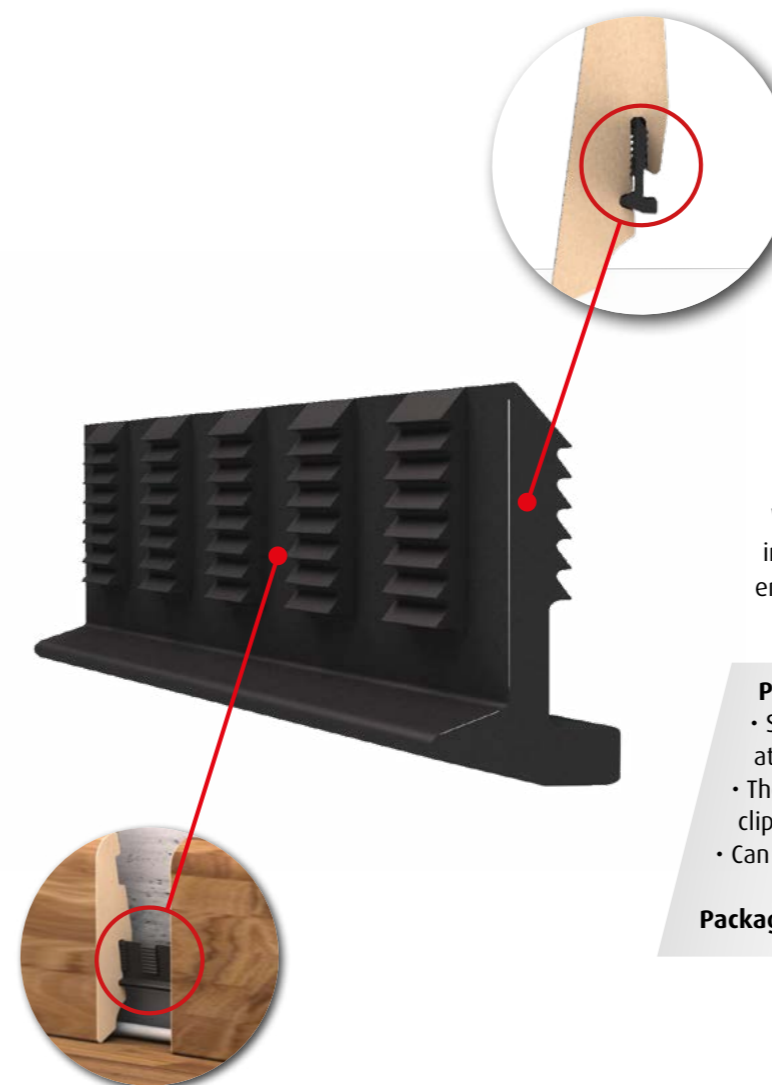
Thinking around the corner.

The CH23 corner clip makes the installation of profiles in corner areas even easier, especially outer corners. The clip bends in the middle to fit perfectly on the inner or outer corner. This ensures that the profile is firmly installed along the entire wall, corners included. Using the clip requires mitre cuts in the profiles. The hole for the screws is completely on the outside so that the two screws in the wall don't get in each other's way.

Product advantages:

- Holds profile ends perfectly in place, especially on the outer corner.
- Can be used only in combination with mitred profiles.
- The clip bends, which means it is applicable for inner or outer corners.
- As functions as a "normal" skirting board clip on straight walls.

Package of 10 pieces including screws and dowels in a PE bag with a cardboard tab. ■



Skirting connector

A real connection.

The most common and practical lengths of profiles is 2.4 m / 7,9 ft. . This makes them easy to transport and install. Since most rooms are longer or wider than that, it is necessary to use multiple profiles. A skirting connector ensures that these connections are as functional and as clean as possible. When assembling the skirting board, the connector is simply inserted into the existing clip groove, producing a more or less endless skirting board.

Product advantages:

- Simple profile connector to prevent misalignment at the skirting butt joint.
- The skirting connector installs in the clip groove in every FN profile.
- Can be easily removed at any time.

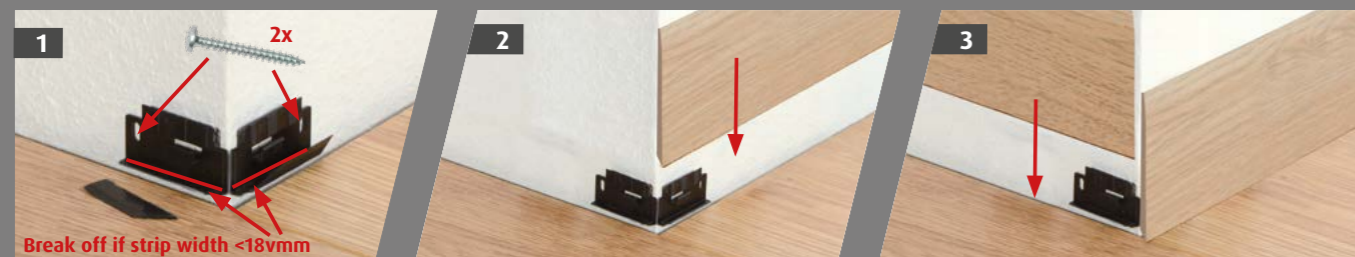
Package of 10 pieces in a PE bag with a cardboard tab. ■

✂ Installation:

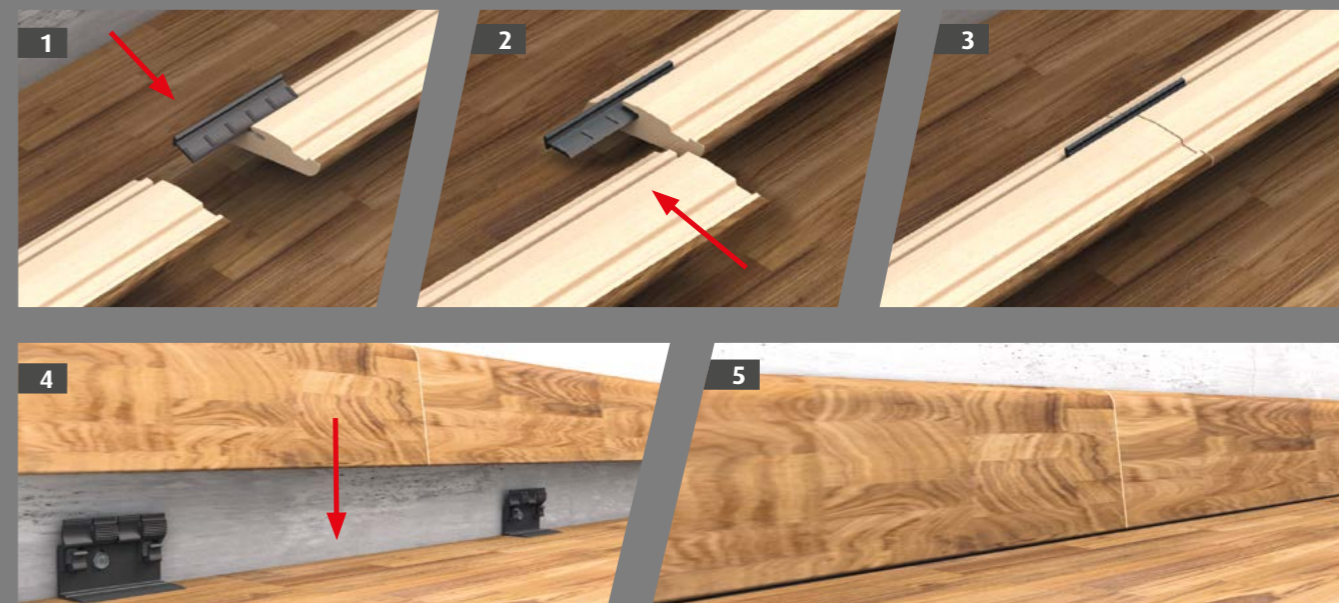
Inner corner



Outer corner



✂ Installation:



FN Clipholder CH20

Clip for profiles.

The FN Clipholder CH20 is made from high-quality plastic. You install the profile onto it from above, which enables you to easily lower the profile if the floor covering underneath settles. This avoids any visible joint openings between the profile and the flooring. You can also lay cables behind the profiles. Thanks to the L shape of the clip-holder, there is no need to use a drill template when installing. The length of the clip (17 mm / 21/32") covers the expansion gap in the floor. For profiles with less coverage, it is possible to shorten the clip by breaking at the notches.

Product advantages:

- Quick, clean and invisible profile installation.
- Avoid gaps between the flooring and the profile by pressing down to lower the installation.
- Repeated assembly and disassembly possible.
- Can also be used on floors that have already been laid.
- Adaptation to irregular masonry possible.

Package of 50 pieces including screws and dowels in a box.
Package of 10 pieces in a PE bag with a cardboard tab. ■



See installation video

FN Clipholder CH27

Seamless adhesive strips.

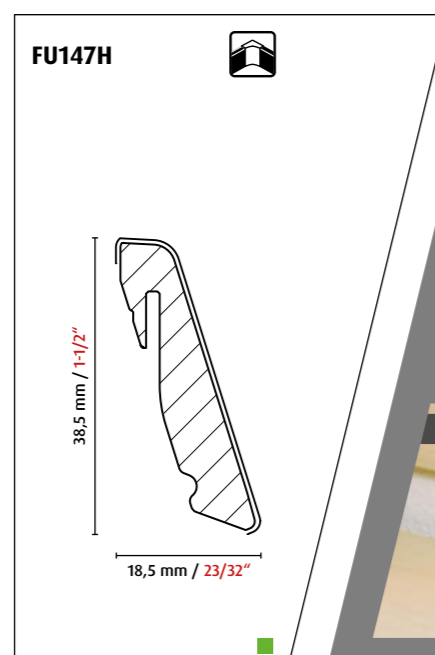
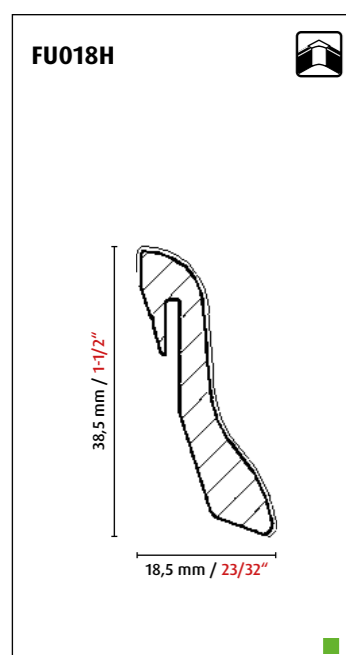
This clip gives the adhesive strip a perfect connection to the wall. The built-in spring supports the clip on the floor, allowing the floor to swell and shrink without changing the position of the adhesive strip attached to the clip. This ensures a closed wall connection joint and prevents the skirting board from lifting off the floor. Of course, this clip can also be used when assembling quarter rounds and curved strips with coverage of > 16 mm / 5/8" .

Product advantages:

- The clip is placed in the expansion joint.
- The spring in the expansion holds the profile against the wall with constant pressure.
- Simply glue the profile to the clip.
- The profile will no longer separate when the floor expands.
- No more gaps when the floor shrinks back.
- Patent pending.
- Also works with curved strips and quarter rods.

Package of 10 pieces in PE bag. ■

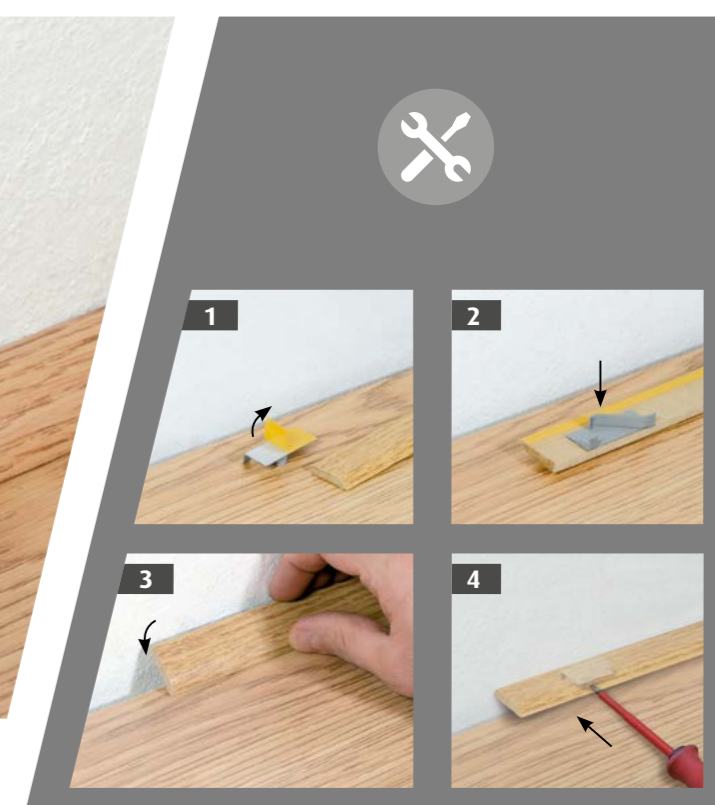
Suitable profile dimensions



Clipholder CH27 with curved strips



Clipholder CH27 with quarter rod





See installation video



FN nailofix CH28

Screwable nail.

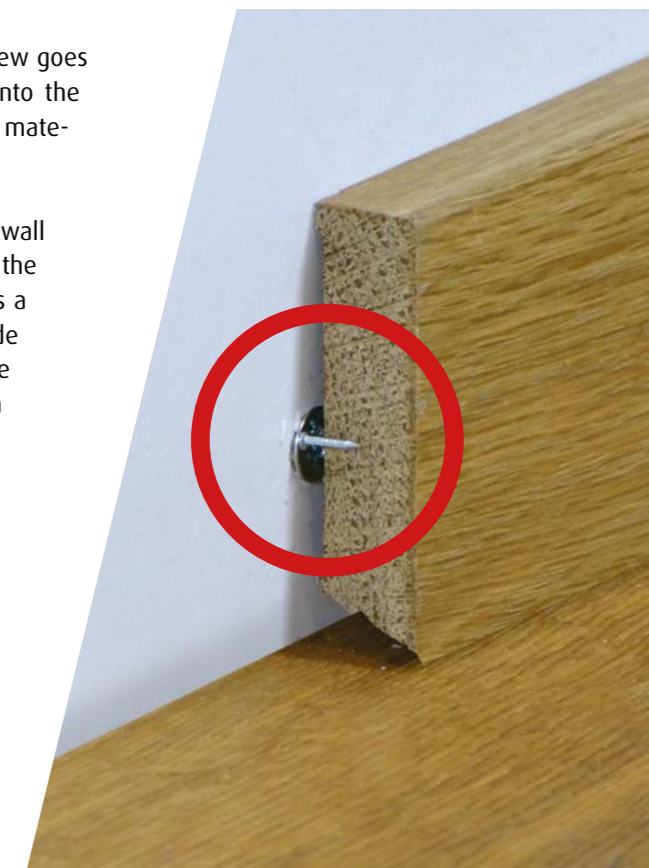
Screw and nail, this clip does it all. The screw goes into the wall and the profile is installed onto the nail. As simple as that. Works with almost all materials: softwood, hardwood, MDF, plastic.

During installation, the clip is screwed into the wall like a regular screw. Depending on the masonry, the included dowel can be used. The screw head has a T15 Torx and is countersunk so it doesn't protrude from the wall. The front of the screw has two fine nails, and the profile is attached onto these using a hammer or mallet.

The clip's installation height is not tied to any grooves in the profile and can be freely selected within the profile height. This makes the installation of profiles with this clip exceptionally easy.

Product advantages:

- One clip for all profiles (shape and material).
- No dependency on specific installation heights.
- Easy to install with a screwdriver or cordless screwdriver.
- Repeated installation and removal of strips and clip possible.
- Patent pending.



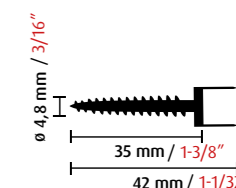
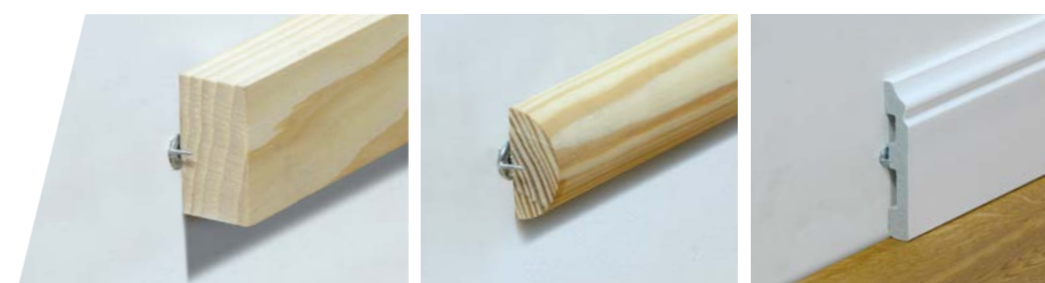
Packaging



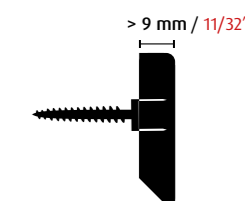
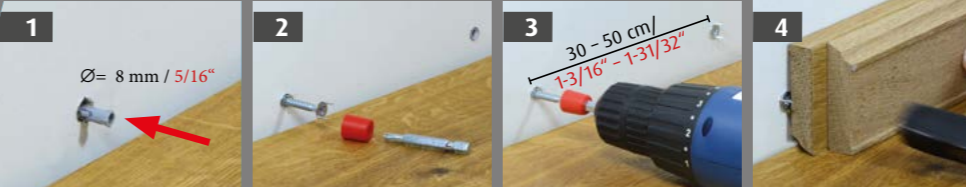
30 or 10 nailofix CH28 pieces + dowel + bit insert in PE bag



30 or 10 nailofix CH28 pieces + dowel + bit insert in box



✂ Installation:



WE. KNOW. WOW!



Insulation strips

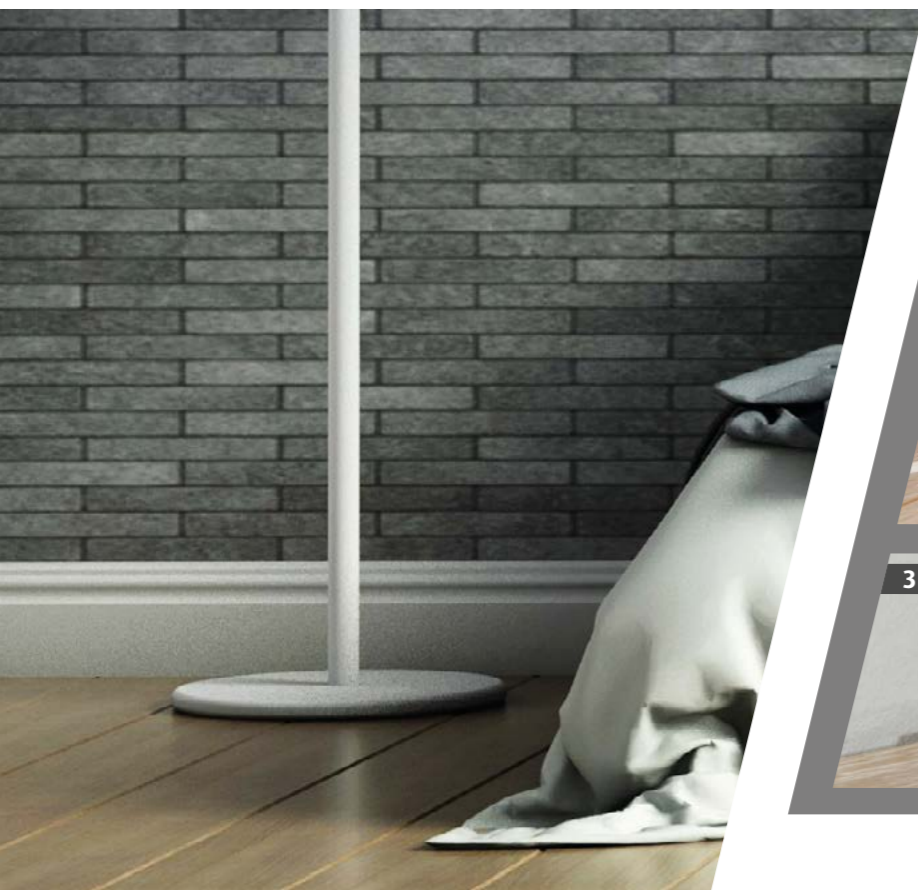
Whisper quiet.

Floor-to-wall sound transmission through the skirting board is a subject that receives little attention. The board has points of contact with the floor, however. The skirting board is connected to the wall with a clip or other fasteners. As a result, flooring can transfer footfall noise to the wall via the skirting board. To stop the transmission of these sounds into neighbouring rooms, we developed the insulating strip. In addition to dampening the noise, it creates a seal between the floor and the skirting board is now sealed, which reduces the penetration of moisture or insects into gap.

Product advantages:

- Reduced sound transmission from floor to wall.
- Protection against moisture penetration.
- Protection against insects.
- Smoother appearance of the joint.

Packaging unit: 2.5 m / 8,2 ft. packed with 10 pieces in a box ■



FN Aquastop

Sealing lip for profiles.

LVT and SPC floors are often cleaned with a wet mop. If made from wood, the skirting should be protected. Water should also be prevented from penetrating into the expansion joints behind and under the boards and floor profiles.

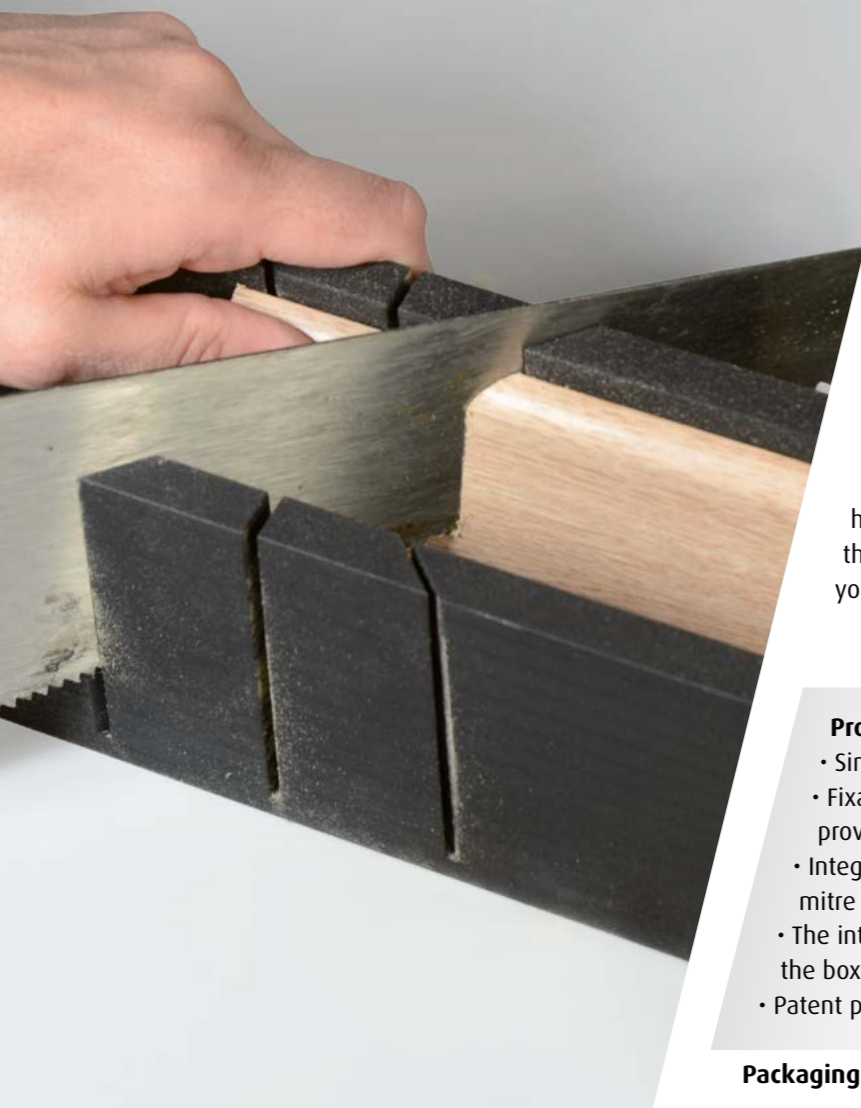
Profiles equipped with sealing lips offer that protection. These sealing lips are transparent, soft and flexible so that they lay flush with their adjoining surfaces and smooth out any unevenness. This prevents water penetration and protects the joints.

Product advantages:

- Sealing lips ensure moisture protection for expansion joints.
- Reduction of sound transmission from floor to the wall via the skirting board.
- Stick-on sealing lips for all FN skirting boards.

Packed in rolls of 2.4m / 7,9 ft.
in a box. ■





Mitre box

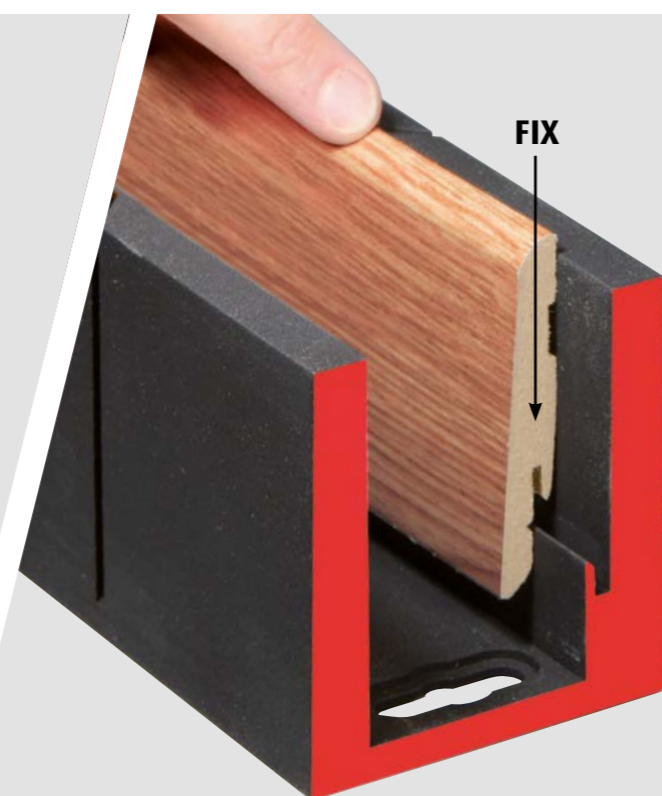
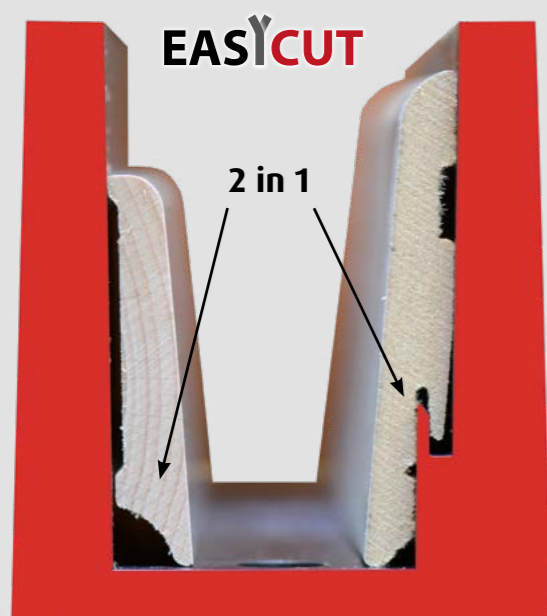
The perfect cut.

The mitre cut: often difficult, but also necessary. A moulding corner cut to a mitre (45°) is still the most elegant and beautiful corner. FN Neuhofer offers the solution: a mitre box that helps create the perfect cut on every profile. The height of the board is decisive: skirting boards up to 85mm high can be cut without any problems. The built-in fixing of the board in its fastening groove is also helpful. This will give you a straight, clean cut.

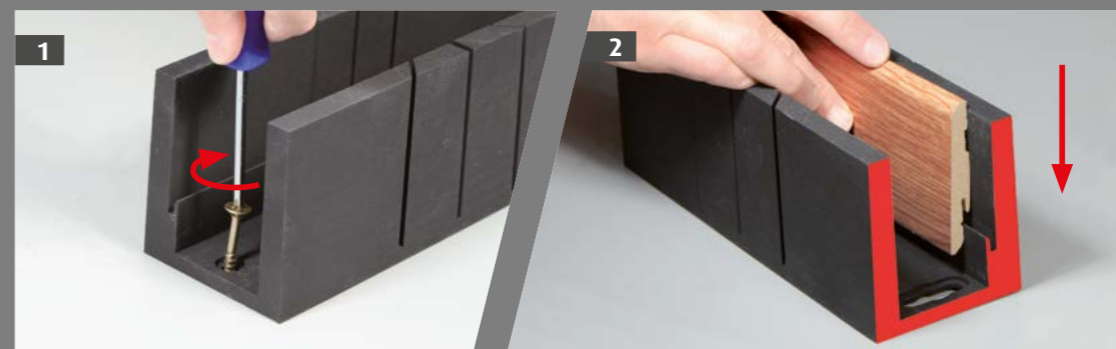
Product advantages:

- Simple cutting of profiles up to 85 mm / 3-11/32" in height.
- Fixation of strips with CH23 clip groove on the provided mount.
- Integrated holes allow you to fix the mitre box to the work table.
- The integrated Euro perforation means the box is easy to present at the PoS.
- Patent pending.

Packaging unit: SB: 1 piece, 6 pieces in a carton ■



✂ Application:



Inner corners



Outer corners



Straight end



End piece



See installation video

WE. KNOW. WOW!



Corners unprinted

No more cutting corners.

The problem of mitre cuts on corners is also solved with the inner and outer corners made of plastic. The plastic components are available in many (wood) colours and are simply pressed between the ends of the square-cut strips. The end pieces provide a visually appealing finish for the skirting board - the base material of the profile is completely covered at the ends. The spacers ensure a clean connection for the profiles.

For profiles:

SU005L, FU014L, SU018L, FU018L, FU018H, SU006L, FU019L, FU051L, KU051L, FU062L, KU062L, SU060L, FU060L, SU153L, KU004L, KU014L, FU147H, K0210L, K0213L. Other shapes available on request.

Suitable for the following wood types:

- White ash • Light maple • Medium maple • Maple • Birch • Unsteamed beech • Natural beech • Hornbeam • Erft beech • Beech • Ash • Spruce • Pine • Light oak • Natural oak • Oak • Cork • Dark oak • Alder • Alder • Cherry • Dark Cherry • Walnut • Wenge • Merbau • Mahogany • Silver • Gold • Gray
- **Special décors on request.**



Corners Printed

Clean solutions for corners and ends.

The problem of mitre cuts on corners is solved with the inner and outer corners made of plastic. The plastic components are available in many wood patterns and colours and are simply pressed between the ends of the square-cut strips. The end pieces ensure a clean finish to the profiles and completely cover the base material at the ends. The spacers ensure a clean connection for the profiles.

For profiles:

SU005L, FU014L, SU018L, FU018L, FU018H, SU006L, FU019L, FU051L, KU051L, FU062L, KU062L, SU060L, FU060L, KU004L, KU014L, FU147H, K0210L, K0213L. Other shapes available on request.

Suitable for the following wood types:

- Maple (birch) • Unsteamed beech • Beech • Ash (spruce) • Oak • Oak antique • Oak • Cherry (alder) • Cherry tobacco • Mahogany • Walnut • Wenge • Cork • Silver • Gold • **Special décors on request.**

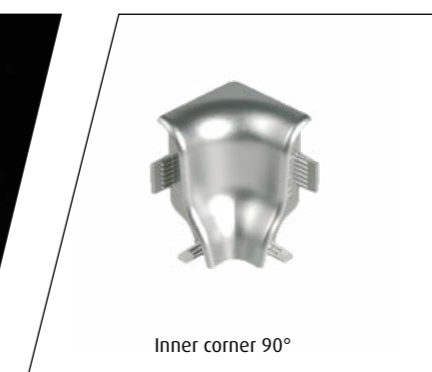
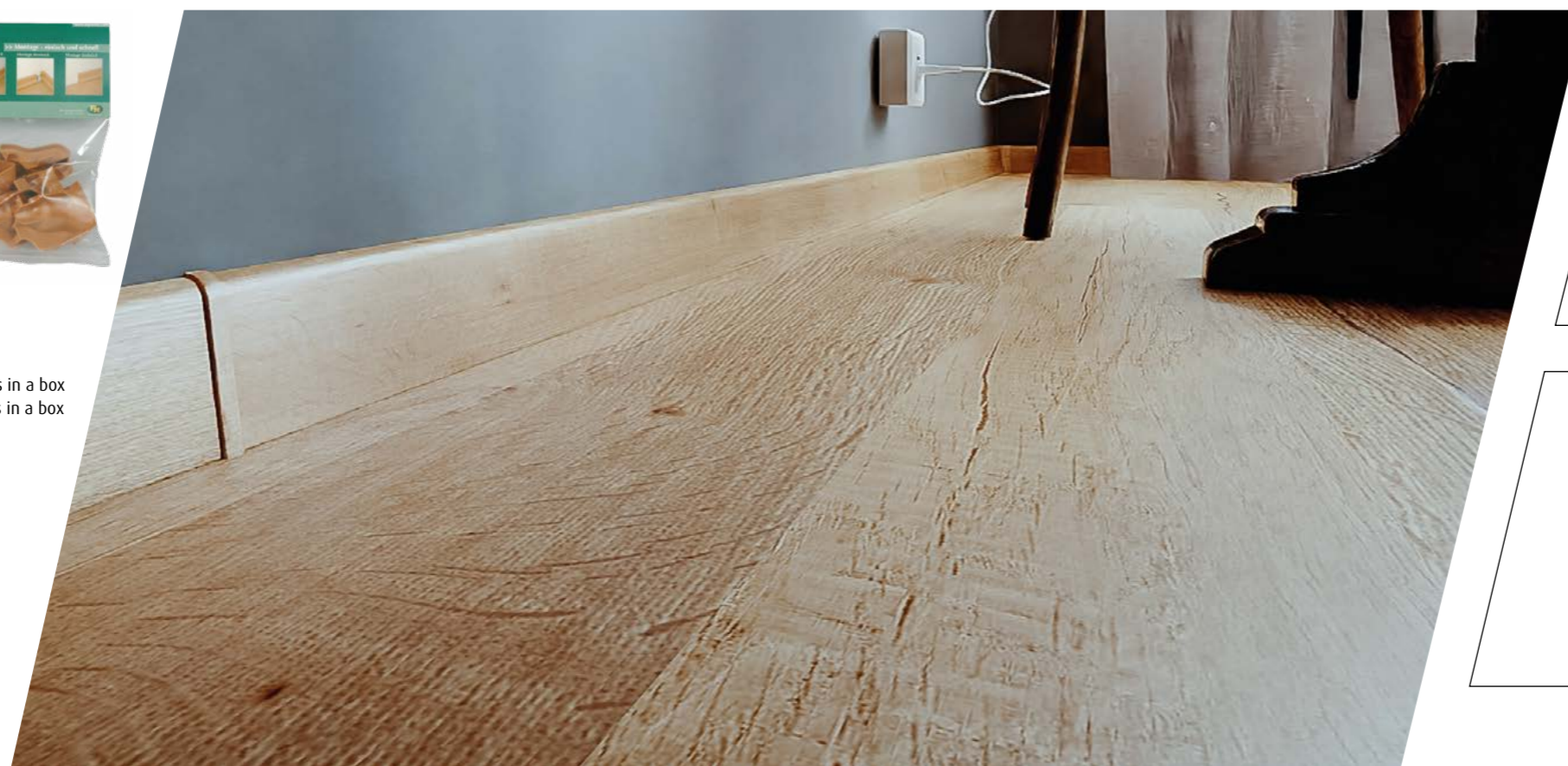


■ Packaging

Package: 2 outer corners with 10 pieces in a box
 Package: 2 inner corners with 10 pieces in a box
 Package End piece - 1 left and 1 right
 End piece, 10 pieces in a box

Corner Value Pack

Packaging
 1 x end piece left + right
 2 x outer corners
 6 x inner corners





Corner sticks

In order to avoid imprecise mitre cuts at the corners, professionals can use these square corner inserts, available in white or a matching colour. They are glued in place on inner or outer corners, or as an end-piece to the profile, resulting in a finish that is not just practical, but looks good, too.

The corners are available in a variety of widths (14 / 9/16", 16 / 5/8", 16.5 / 21/32", 18 / 11/16", 20 / 25/32", 22 mm / 7/8"), heights (40 - 122 mm / 1-9/16x4-13/16") and materials (MDF, pine, PVC). This makes these inserts suitable for profiles up to a maximum of 120 mm / 4-23/32".

Product advantages:

- Ideal as corners or for edging.
- Easy to trim to size and glue into place.
- Available in matching colour or in white.
- The corner stick should always be at least 1 mm wider and higher than the profile.

Packaging in 2 or 6 pieces in a PE bag with a cardboard tab. ■



See installation video



Accessories for floors

A skirting board provides the perfect finish between the floor and the wall. The required expansion joint is stylishly concealed and the profile, which matches the floor, completes the room. Foiled profiles are usually laid for laminate floors and veneered profiles for parquet floors. The reason is obvious: the same materials react in the same way to light and moisture.

Installation springs

Simplifying the installation of flooring.

The innovative installation springs from FN Neuhofer Holz are a huge help when installing. The easy handling and the practical application save you time and nerves.

Security.

The decisive advantage of this application is that these installation springs can remain in the expansion joint after the floor has been laid – without causing any damage, unlike forgotten spacer wedges. The FN IS 1 and FN IS 2 installation springs prevent buckling of the floor due to moisture, temperature changes or forgotten spacer wedges. This gives the floor enough space to move.

Effective support.

The FN IS 1 and IS 2 installation springs were developed as effective support for the floor layer when laying so-called click flooring, where the springs can be used for a floor thickness of 6 mm / 1/4" and up.

Simply insert the FN installation springs into the expansion joint instead of the spacer wedges when laying the floor.

Product advantages:

- Very easy to handle.
- Prevents floor bulging.
- Helps centre the flooring.
- Long-term prevention of gaps in the flooring.
- Practical application due to individual snapoff springs.
- IS 1 for floor thicknesses of 6 mm / 1/4" and up (laminare floor), IS 2 for floor thicknesses of 11 mm / 7/16" and up (parquet floor).
- Patented (AT 503230, AT 503231 B1).

FN IS01 Instalation spring



6 mm
1/4"

FN IS02 Instalation spring



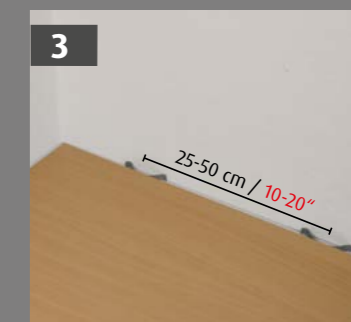
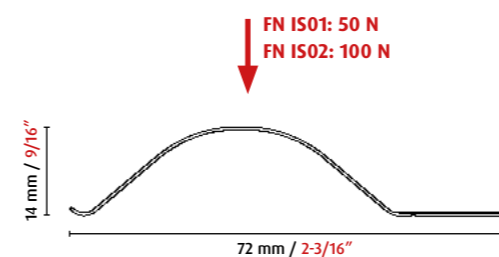
11 mm
7/16"



Link to the assembly film
IS1/2

Load

FN IS 1 & IS 2 -
centring tools for floors



WE. KNOW. WOW!

Wooden wedges

These practical little wooden wedges are a high-quality and versatile by-product of our solid wood production. The exclusive use of knotless spruce or pine guarantees the quality and functionality of the wedges in many areas.

Whether you use them for assembling furniture, to secure various things in the house or garden or to stir paint – these special wooden wedges are perfect in every respect.

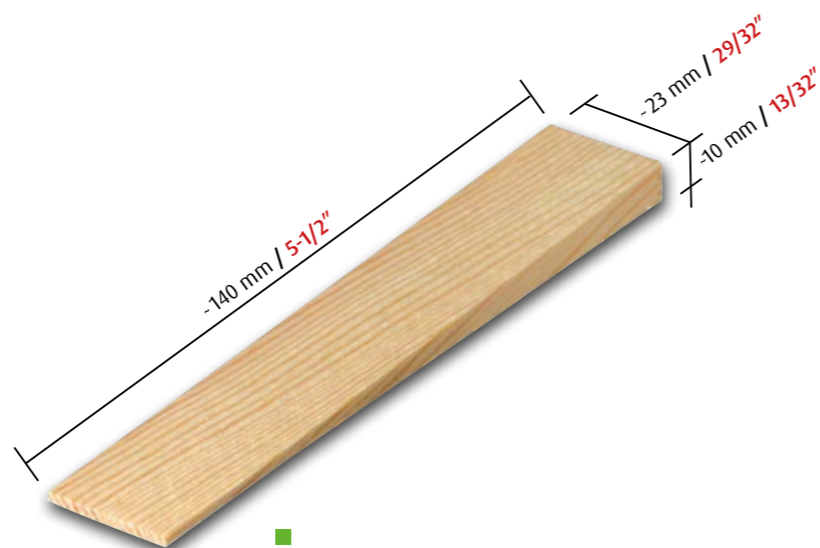
They are available in a practical package of 12 wedges and can still serve a valuable purpose after use, e.g. as excellent kindling with great burning characteristics.

Product advantages:

- Universal tool in the house and garden
- Small, light and easy to use
- Environmentally friendly product made from renewable raw materials
- Indispensable for arranging and setting up pieces of furniture
- Perfect for mixing paint or varnish
- Ideal for kindling after use

Packaging unit:

- Universal tool in the house and garden



Installation accessories

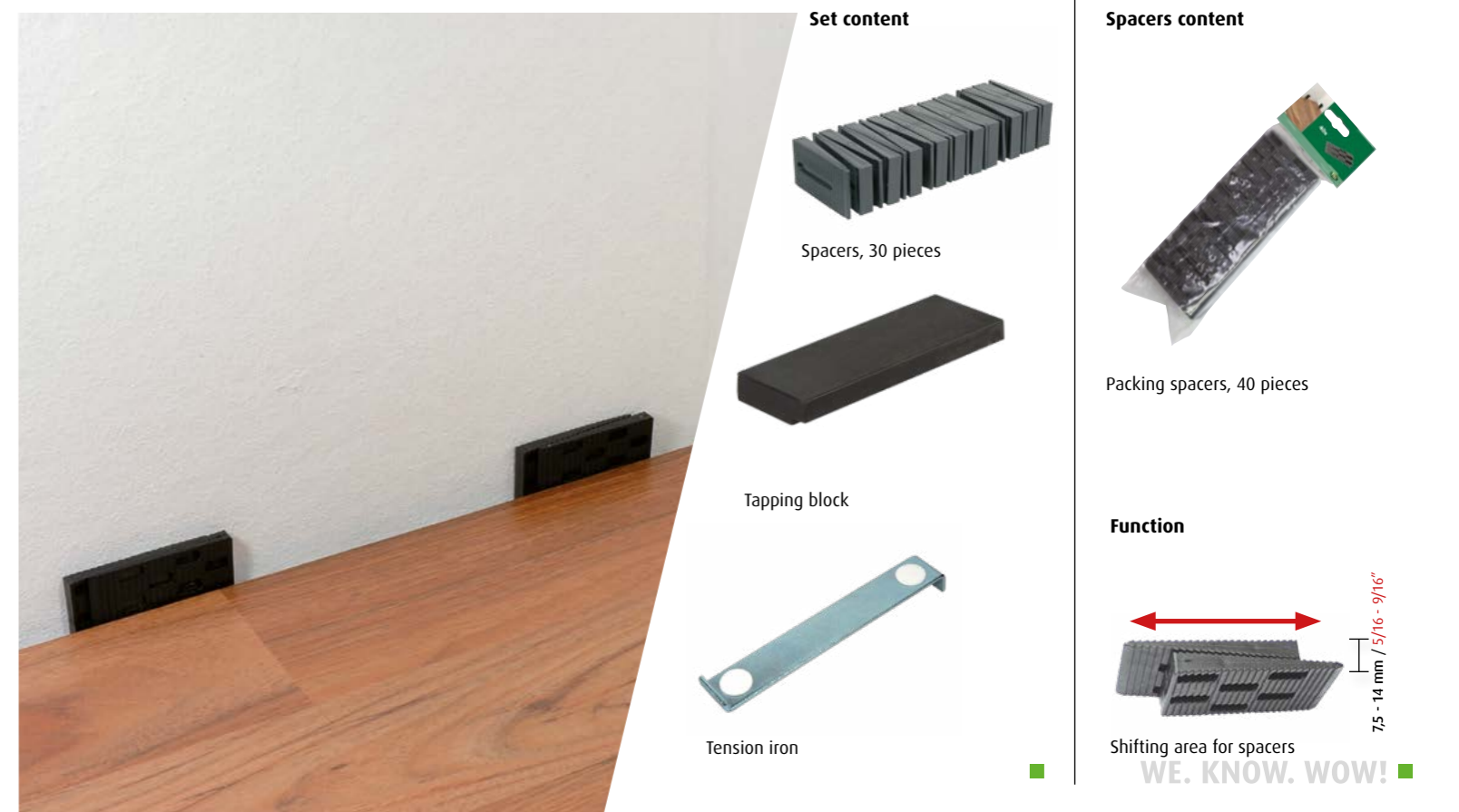
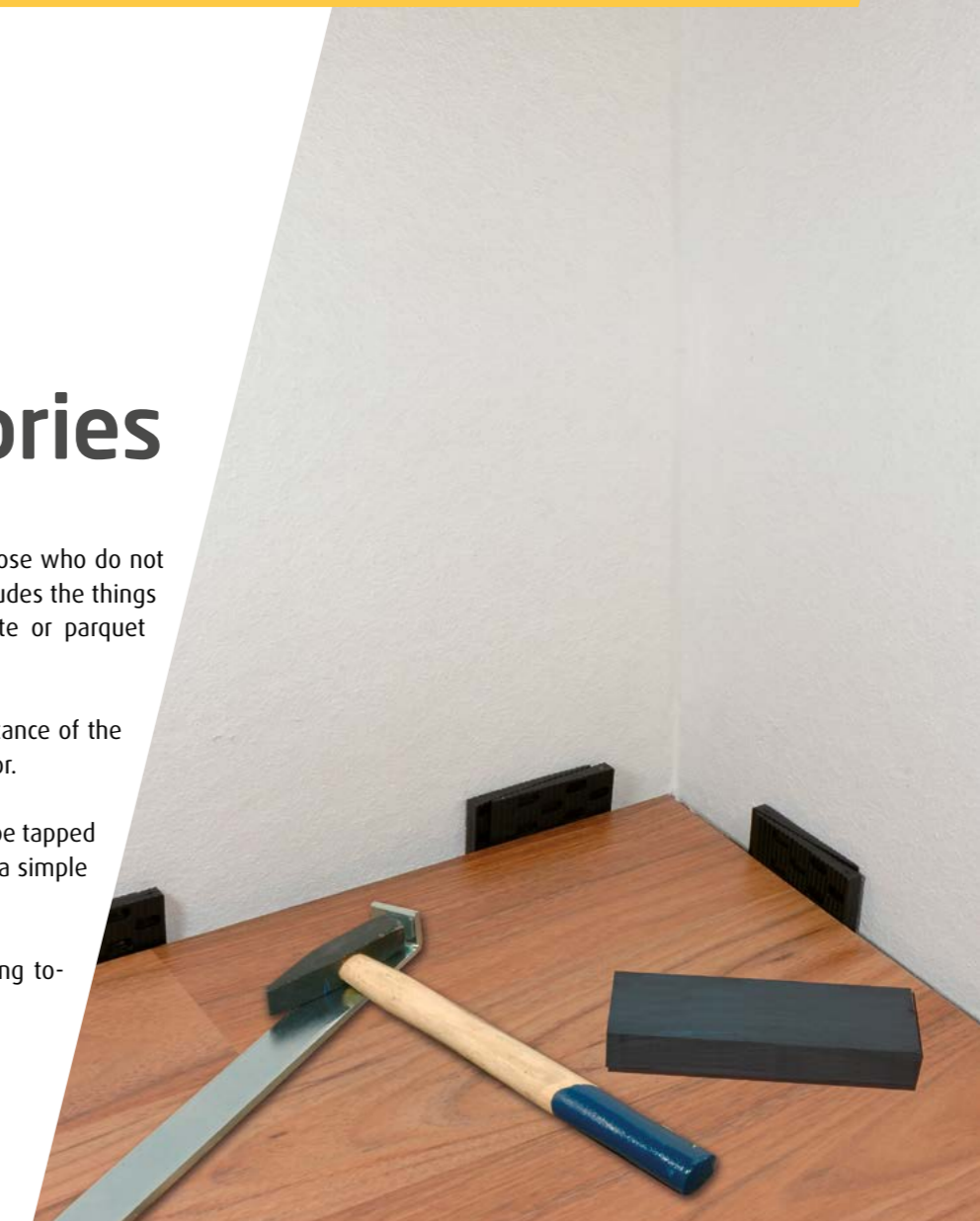
Make installation easy.

We have put together this practical set for those who do not have access to professional equipment. It includes the things you need for the DIY installation of laminate or parquet floors without clip connections.

Spacers – they are used to set the correct distance of the expansion joint between the wall and the floor.

Tension iron – this allows individual panels to be tapped together in inaccessible places on floors with a simple tongue and groove connection.

Tapping block – this is used to tap the flooring together on the front and long sides.



Set content



Spacers, 30 pieces



Tapping block



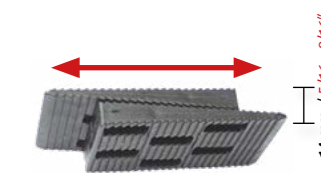
Tension iron

Spacers content



Packing spacers, 40 pieces

Function



Shifting area for spacers

WE. KNOW. WOW!



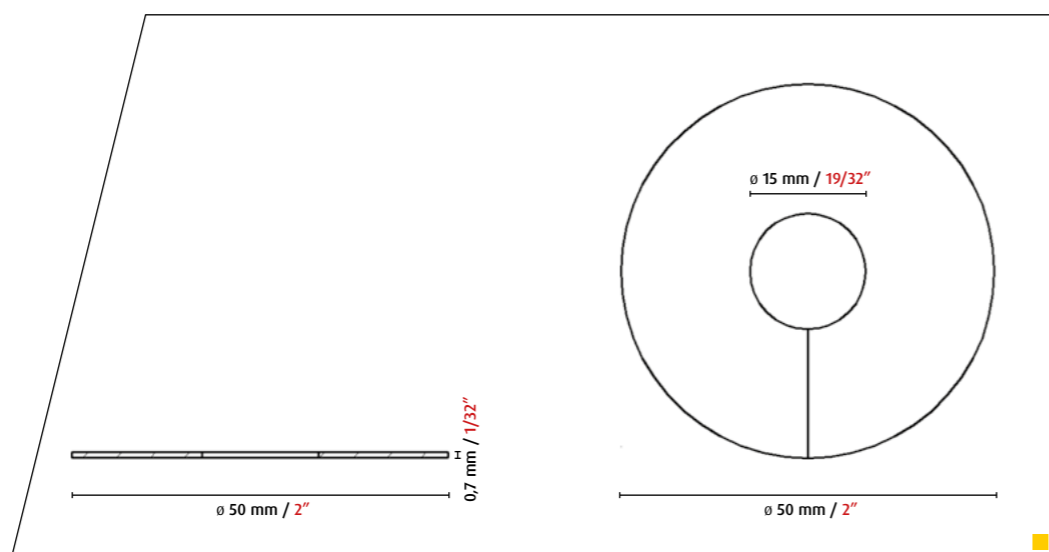
Plastic adhesive rosettes

Simple adhesive rosettes made from printed plastic film with adhesive tape on the back. The adhesive rosette is slotted on one side and can be quickly and easily installed around the heating pipe.

- Design:** printed.
Sizes: 15mm / 19/32".
Print: possible in the most diverse types of wood (birch, beech, oak, rustic oak).
Packaging: in a carton of 10 self-service packs

Product advantages:

- Quick and easy to use.
- Extremely flat solution.
- Self-adhesive.
- Possible in various decors, adapted to the floor.



Plastic rosettes

A radiator rosette for 3 different pipe diameters. Grooving on the back makes it very easy to adapt to adjust the rosette to the diameter of the heating pipe.

- Design:** printed or plain.
Sizes: 15 mm / 19/32", 19 mm / 3/4", 22 mm / 7/8".
Print: in the types of wood: oak, beech, maple, cherry, mahogany (merbau).
Single colours: gold, silver, white, beige, brown.
Packaging: in a carton of 10 self-service packs or in PE packs of 50 pieces

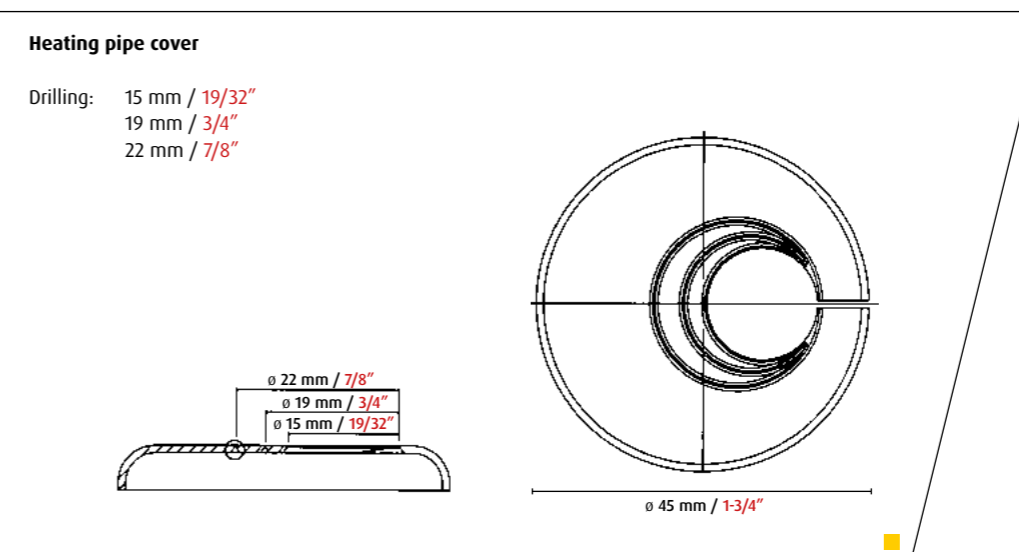
Product advantages:

- One rosette for 3 diameters.
- Eccentric hole, therefore also suitable for pipes lying next to each other.
- Available printed or unprinted.



Heating pipe cover

- Drilling:** 15 mm / 19/32"
 19 mm / 3/4"
 22 mm / 7/8"





Simple rosettes

A clean finish where the heating pipe meets the floor. No glue necessary: simply plug the elements together thanks to the form-fitting design.

- Design:** surface treated wood.
Sizes: 15 mm / 19/32", 19 mm / 3/4", 22 mm / 7/8".
Type of wood: oak, beech, ash, maple, cherry, mahogany (merbau), cork, lacquered (white).
Packaging: in a carton of 10 self-service packs or in PE packs of 50 pieces

Product advantages:

- Real wood rosette.
- No gluing necessary due to dovetail connection. Simply plug it together.
- Lacquered surface.

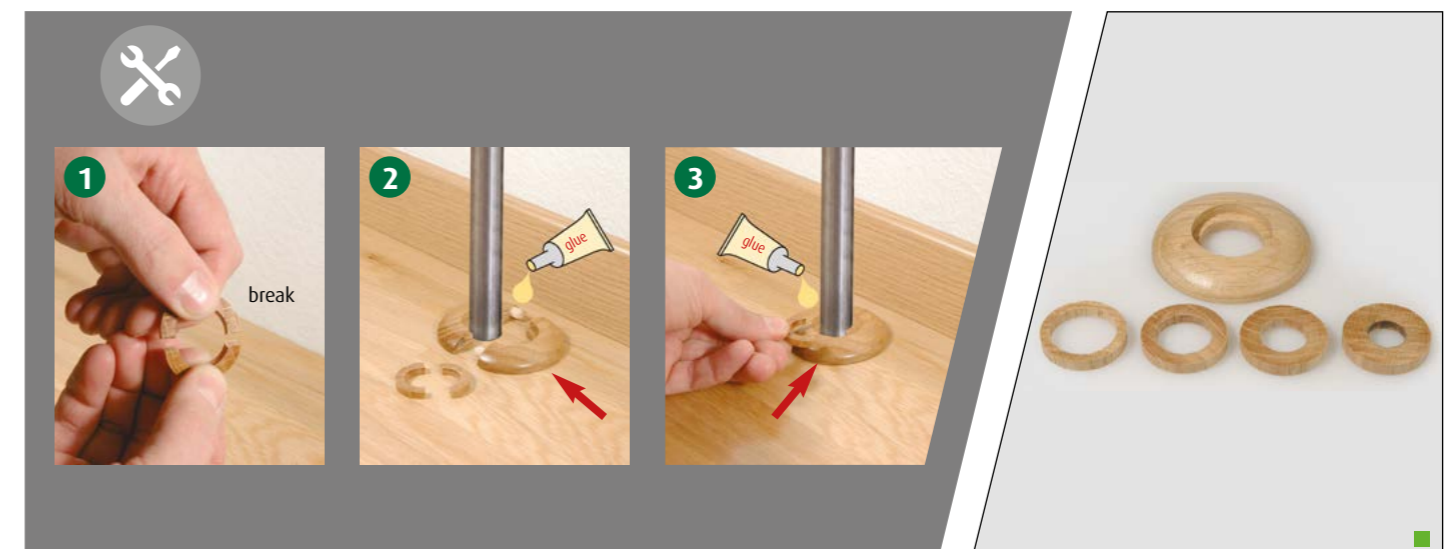
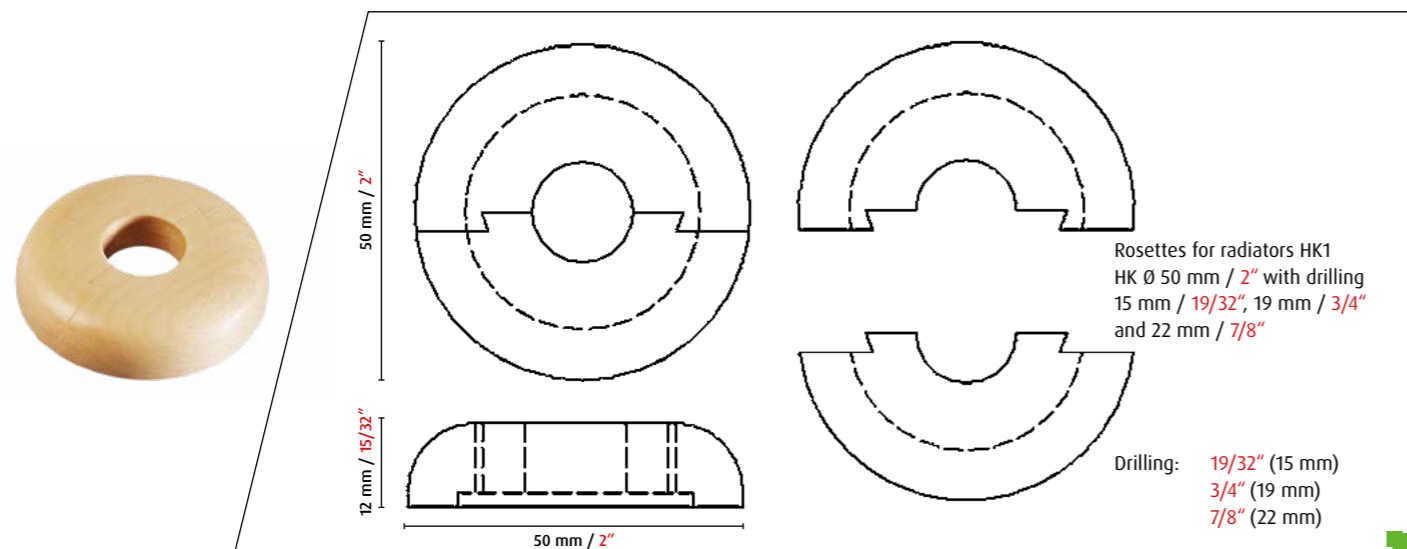
Rosettes with adjustment rings

A visually clean border for the heating pipe, complete with adjustment rings for the most common pipe diameters, allowing for easy placement into the rosette.

- Design:** surface-treated wood.
Sizes: 12 mm / 15/32", 15 mm / 19/32", 19 mm / 3/4", 22 mm / 7/8".
Type of wood: oak, beech, ash, maple, cherry, mahogany (merbau). lacquered (black and white).
Packaging: in a carton of 10 self-service packs or in PE packs of 50 pieces

Product advantages:

- 1 belt rosette with 4 inserts, depending on the tube diameter.
- Visually appealing skin packaging on cardboard card



Discover our wider range

FN FOILED PROFILES

Foiled mouldings are usually laid to laminate flooring. The reason is obvious: the same materials react in the same way to light and moisture. A wide range of shapes and decors leave almost nothing to be desired, especially when it comes to matching the decor of the skirting to the floor. In-house digital printing makes it possible!



FN VENEERED PROFILES

A skirting board provides the perfect finish between the floor and the wall. The necessary expansion joint is stylishly and elegantly concealed and the profile, ideally in the same décor as the floor, completes the room. Veneered profiles are usually laid with parquet floors. The reason is obvious: the same materials react in the same way to light and moisture.



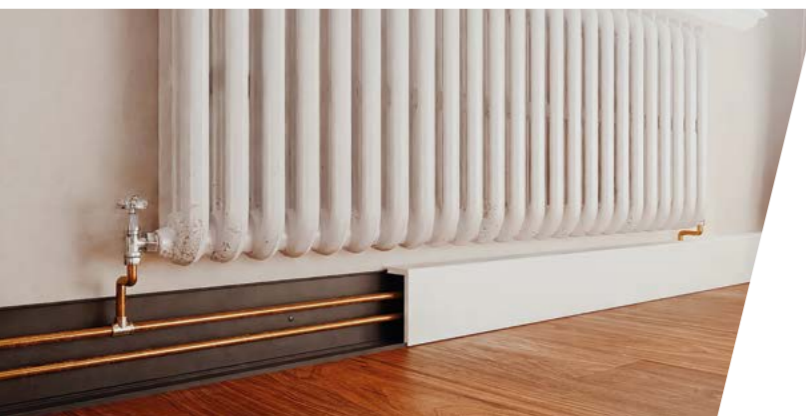
FN WHITE PROFILES

White skirting boards are modern, elegant, stylish and very much in fashion. We offer an extensive variety of different materials and surfaces as well as shades of white. The following pages provide an overview of this product range. Find the perfect version for your market.



FN FUNCTIONAL AND WATERPROOF PROFILES

If the standard no longer fits or special challenges need to be overcome, FN Neuhofer offers a selection of special solutions for a wide range of applications. And for LVT or waterproof floors, there are matching waterproof skirting boards, decorated to match the floor or simply in white.



FN SOLID WOOD PROFILES

Wood in its most natural form, cut and planed, raw or varnished, sustainable and destined to last forever: these are our solid wood profiles, made from hardwood or softwood. Real, natural and grounded. Whether you need a resilient skirting board, wood for crafts for everyone and everywhere in the house, or old wood for a one-of-a-kind ambience.



FN FLOOR ACCESSORIES

Clips, corners and numerous other accessories are indispensable for quick and easy moulding installation. The mouldings are all provided with functional grooves into which various clips, fixing rails or holders for corner pieces can be inserted. The aim is always the same: to make installation as easy and uncomplicated as possible for the customer.



FN FLOORING PROFILES

When installing flooring, each room is usually laid as a separate area. During this process, an expansion joint should be planned under every door. And if the floor areas become too large, they should also be separated by expansion joints. If there are different coverings in the individual rooms, such as tiles, laminate flooring, parquet flooring or LVT flooring with different floor heights, it is essential to cover the joints that are created as a result.



FN LIVING

Modern wall design with additional benefits is important in today's fast-paced and noisy world. Acoustic panels create peace and quiet in your own home, while various wall paneling systems enhance the room and create a cosy ambience. And the DIY concept is not neglected either. You can fill, glue, paint and realise your own creativity.





All dimensions and performance of the products stated in the product catalogue are to be regarded as approximate. The stated dimensions and performance of the products are non-binding; this applies in particular to their quality, colour and design (grain, surface, etc.). Furthermore, we expressly reserve the right to make any deviations from the products shown in the product catalogue; the offer and order confirmation are exclusively authoritative, based on the General Terms and Conditions (see <https://www.fnprofile.com/de/verkaufs-und-lieferbedingungen-01-01-2022.html>). The customer can therefore derive no rights - of any kind whatsoever - from pictorial representations and/or specified dimensions and services in accordance with this product catalogue.

Printing and typesetting errors and mistakes excepted. 01/25

NEUHOFER HOLZ GMBH
A-4893 Zell am Moos, Haslau 56, Tel.: +43 (0)6234/8500-0,
office@fnprofile.com, www.fnprofile.com



Here you can find our social media channels



The mark of responsible forestry